

SKODA



The new  
**Scala**

## For all that you are

You are what you do. And if you play a lot of roles in life, then you need a playmate who can keep up with your pace. Someone like the new Škoda Scala.

The Scala's do-it-all attitude is dressed in a strikingly unique design. Inside, the Škoda Scala continues to tick all possible boxes with its host of comfort, connectivity and safety features. The modern driver will certainly feel empowered by must-haves like the LED headlights, Climatronic panel, Virtual Pedal and immersive infotainment display.

That's what we call versatile. That's what we call Škoda.





## **Add beauty to duty**

We believe that your companion for everyday mobility should bring you joy and excitement with its attractive looks. The Scala is an example of that. The compact hatchback combines the sporty style and empowering functionality that builds on the long heritage of Škoda family cars.



## Active meets attractive

At the first glance, you'll notice the sleeker headlights. The wider front grille and distinctively sporty-shaped bumper complete the new, more dynamic look of the Scala. The sportier rear bumper sets off the whole style. Still as practical as ever, but now even more attractive.



### Panoramic roof

On the outside, the panoramic roof underscores the sleek, stylish look. On the inside, it brightens the interior and opens the view of the sky above.

The sleeker, sharper taillights are the prominent feature of the new Scala's rear. The rear bumper with integrated diffuser and eye-catching reflectors adds a sporty touch. The elongated rear window with spoiler and Škoda lettering remains as classy as ever.



## For day shifts and night shifts



### Matrix headlights

They catch the eye and help you see. The three-dimensional design with crystal structure is one of the most prominent visual features of the car, while the advanced TOP LED Matrix technology improves visibility for the driver.

### Dynamic rear lights

Helping you be seen with the bright LED light and immersive design. The crystalline elements dynamic turn signal function of the TOP LED rear lights will attract the attention of everyone behind you.



#### **Virtual Pedal**

Full hands are not a problem any more. With Virtual Pedal, just a swing of the foot under the bumper is enough to open the door. Available in combination with KESSY and electric 5th door.

#### **KESSY**

No more hassle looking for your keys. With the Keyless Entry, Start, and Exit System, the doors unlock or lock again with just a touch of the door handle. You just need to have the key in your pocket.



**Door edge protection**

Protect your cars and others in the car park. Door edge protection prevents door dings with a simple, reliable mechanical device.

SCALA



## Living room. Lounge. Office

Driver focused and sharp, yet functional and roomy for all passengers. The focal point of the new interior is the 10" Virtual Cockpit, accompanied by 9" Škoda Navigation in the middle of the dashboard. The dashboard itself draws attention with a choice of new upholstered décors made of fabric, Suedia or Carbon look. These are matched by the redesigned seat upholstery for all trim levels. The new ambient lighting with two switchable colours underscores the stylish look.





### **Climatronic**

Maintaining a pleasant climate on board is now easier than ever. The Climatronic air conditioning system is fitted with a pair of buttons that allow you to adjust the air flow without taking your eyes off the road.

## **Home to all your digital avatars**

Today's world is digital. The Scala is the perfect everyday companion to take care of your digital needs as well. Whether charging your devices or providing you with the latest information on a big screen, it always has a solution.



### **Always charged**

With a pair of USB-C ports as standard and optionally available wireless charging, you can keep your devices charged at all times with ease.

### **Connectivity**

You can display your apps on the Infotainment display using Apple CarPlay and Android Auto either wirelessly or via the USB-C ports, which also offer fast 45 W charging for your devices.



## Škoda Connect: Take the online world with you

Stay connected wherever you are. Being fully and permanently online means always having access to entertainment, information, and possible assistance while on the move. Škoda Connect is your gateway to a world of unlimited communication options.



### MyŠKODA Essentials

Enjoy full control of your car. Download MyŠKODA Essentials and access all necessary services anytime, whether it's driving data, fuel range, lock and unlock or even where you last parked

### Online Traffic Information

With Online Traffic Information, you always get up-to-date information, saving you time and the stress of sitting in traffic jams. If enabled, the navigation system will automatically recalculate the route to arrive at the destination just in time.



## Additional connectivity options

Discover additional options and features. For example, with Laura, a digital voice assistant is available in your car. With the SmartLink feature, supporting Apple CarPlay and Android Auto, the car's infotainment system allows you to use your phone safely while driving. You can also enhance the in-car connectivity with additional infotainment apps such as Weather, News, Digital Manual, Traffication, and many more.



### Traffication

The Traffication app increases your safety by providing traffic-related warnings from the vicinity of the vehicle. Running in the background, it alerts you if you are attempting to drive the wrong way down a road. Notifications are also shown in the event that hazard lights are activated in the radius of your vehicle.

### Laura digital voice assistant

This online-based voice control system understands fluent sentences. Say the destination with natural voice input, dictate text messages, or even ask her to tell you a joke. The online part of Laura is ready for anything. To start fulfilling your wishes, simply contact her by saying "Okay, Laura!"



#### **Box for rear passengers**

Rear passengers will enjoy the smart storage box on the centre tunnel. It includes a flexible cupholder, which can be folded away when not used to make more room for anything they might want on hand.

## **Always more than meets the eye**

When exploring the world, it's good to have a partner who takes care of all the small things. With its many smart solutions, the Škoda Scala does just that. Everything you might need is easily on hand in the spacious cabin full of storage options.



#### **Double pocket**

Keep your things organised with the double pockets on the rear sides of the front seats. The larger one is perfect for a notebook or laptop computer, while the smaller one nicely fits a smartphone.



### Net programme

Everything in its place and easy to see. This set of three nets keeps your items from moving around while keeping them in good view.

## If it matters, it fits

Wherever you're going, it's great to have space for everything you might need. It's even better to have everything well-organised and secured safely. With 467 litres of luggage space and a plethora of smart details, everything will find its place and stay exactly where you want it to be.



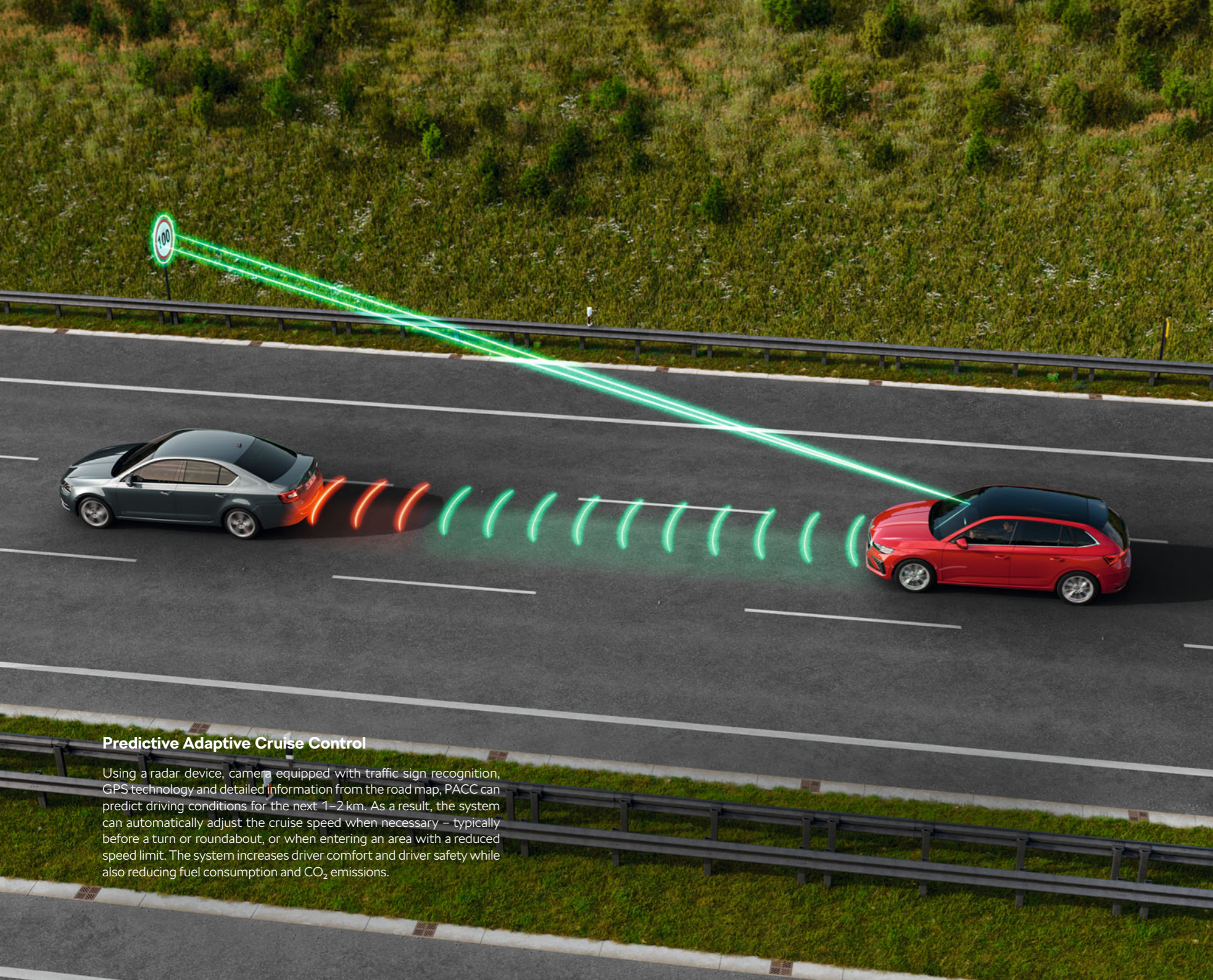
### Net pocket

Lighter items that need to be on hand even when the boot is full can be stored in the practical net, out of sight under the luggage room cover.



### Cargo elements

The easy way to secure larger items. Cargo elements are fixed to the floor using Velcro and can be folded into any angle.

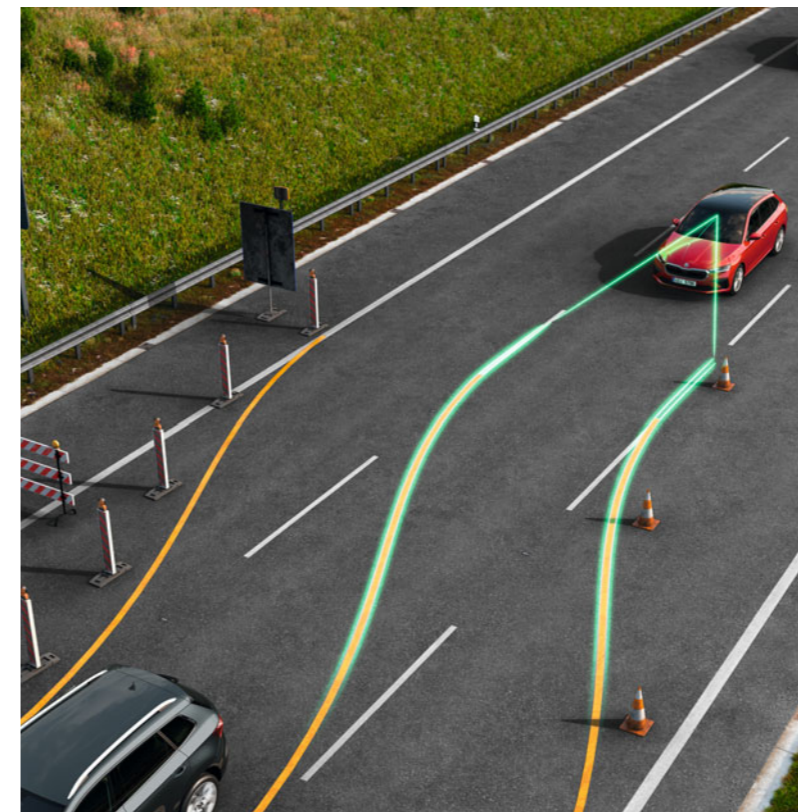


### Predictive Adaptive Cruise Control

Using a radar device, camera equipped with traffic sign recognition, GPS technology and detailed information from the road map, PACC can predict driving conditions for the next 1–2 km. As a result, the system can automatically adjust the cruise speed when necessary – typically before a turn or roundabout, or when entering an area with a reduced speed limit. The system increases driver comfort and driver safety while also reducing fuel consumption and CO<sub>2</sub> emissions.

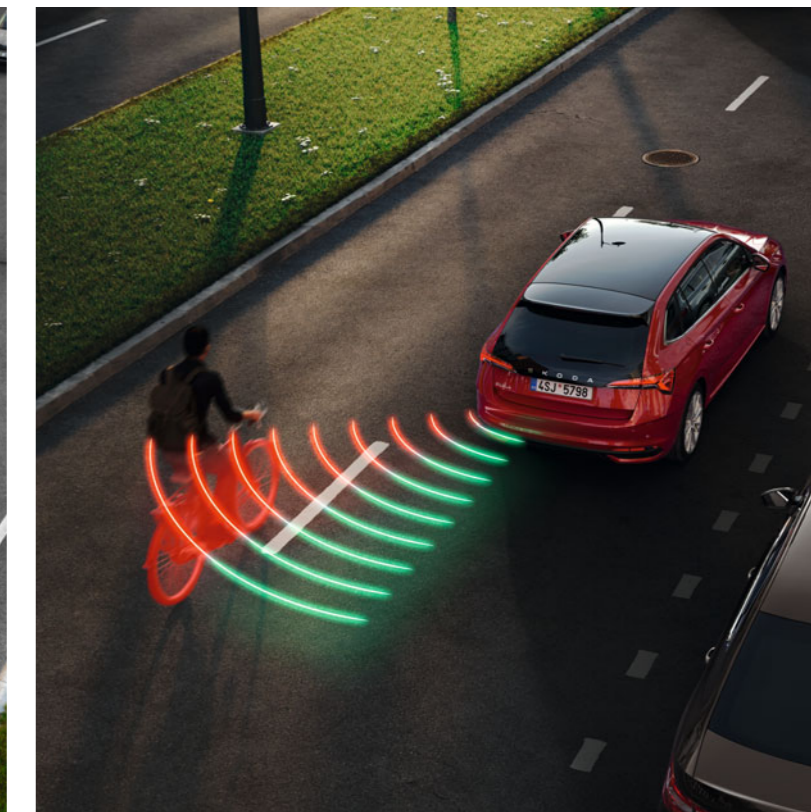
## Even safety can multitask

The Travel Assist system combines Adaptive Cruise Control (including Front Assist) and Adaptive Lane Assist functions. For maximum safety, the system must be constantly monitored by the driver. That's why a capacitive steering wheel detects the driver's tactility, providing an interactive interface to the system. If the driver is not engaged in driving, the system issues a visual and audible warning and eventually disengages.



### Adaptive Lane Assist

The system is capable of keeping the car in the middle of the correct lane and of alerting the driver in case of deviation. It can also take control of the car in the event of lane changes during roadworks.



### Side Assist

Using radar sensors in the rear bumper, Side Assist (which can detect other vehicles and harder to see objects like cyclists up to 70 m away) monitors the areas behind and beside your car. Based on the distance and speed of the surrounding vehicles, it decides whether or not it should warn the driver.



### Matrix LED headlights

The TOP LED Matrix headlights feature Matrix Beam Function. This allows you to use the high beams continuously, without blinding other drivers. Using a windscreen camera, the Matrix Beam Function responds to the traffic situation and turns off only some segments of the light. Other segments are turned on and illuminate the road. The Matrix Beam Function also uses information from the navigation system. Thanks to it, the high beams will only turn on when you are out of a built-up area.

## Eyes up front. And behind



### Rear Traffic Alert

Using the Side Assist sensors in the rear bumper, Rear Traffic Alert helps you reverse safely from a parking space during poor visibility. It can even engage the brakes automatically if it detects imminent danger.

You can encounter various things on the road. To ensure that the car is ready to handle all situations that may occur en route, additional assistants with multiple functions are on hand to help or fill in for the driver.



### Park Assist

Minimise the hassle of parking in tight spots with Park Assist. It automatically selects an appropriate parking place and safely parks in a row of parallel or perpendicularly parked vehicles.



# Monte Carlo





## Add character to all your characters

Inspired by the great racing heritage of Škoda. Designed to look great both on the roads above Monte Carlo and in the elegant city itself. The Scala Monte Carlo brings sporty style into everyday driving.



### Winning looks

Unmistakably sporty, undeniably stylish. The aerodynamic front bumper with integrated spoiler adds dynamic flair, while the gloss black details perfectly suit whatever body colour you choose. The TOP LED Matrix headlights are part of the standard equipment.

The prominent rear bumper with gloss-black diffuser is no not only attractive to look at, but also aerodynamically efficient. Other highlights that are sure to be noticed by the drivers behind you are the elongated glazing and the gloss black lettering.



## The trendiest address in any town

Monte Carlo is not only synonymous with the excitement of the famous rally, but also living in style and comfort. The Scala Monte Carlo embodies the same. Scala Monte Carlo is the same. The Carbon look dashboard pad and door inserts combine the elegance with the sporty, dynamic look, which is further enhanced by the characteristic red accents on the upholstery, multifunction sports steering wheel in perforated leather, sports pedal covers and black headliner. The comprehensive equipment, including the Climatronic climate control, 8-speaker stereo, and switchable ambient lighting is there for comfort. The Drive Mode Select allows the driver to choose between the dynamic or cossetting side of the Scala's character.



## Racing genes in every corner

The Monte Carlo creates a sportier ambience without compromising on comfort or practicality. It comes with sports seats, sports steering wheel, Carbon look dash pad and door inserts and two-colour ambient lighting.



### Focused on the driver

The multifunctional sports steering wheel is upholstered with perforated leather for even better grip and Monte Carlo badge for added style. The optional 10" Virtual Cockpit comes with specific sport skin.

### Sports seats

The Monte Carlo seats will catch your attention with their sporty red and grey accents. They provide great lateral support for dynamic driving, and plenty of comfort for your everyday commute.





### Studio interior

Grey metallic pad with glossy black décor  
Black/grey fabric upholstery

## Essence

The standard equipment of the Essence version includes 8" Škoda Infotainment, 8" Digital Display, manual air conditioning, Bluetooth, rear sensors, LED headlights, and more.



### Studio

The Studio interior boasts a modern, practical design in a combination of black/grey upholstery with grey metallic pad, glossy black décor and satin black door inserts.



### Loft interior

Krepp recycled pad with glossy black décor  
Krepp recycled / black fabric upholstery

## Selection

The standard equipment of the Selection version includes electric windows front and rear, multifunction steering wheel, fabric dashboard pad, height-adjustable front seats, Hill-Hold Control, Easy Start, LED fog lights, mobile phone pockets and more. The Selection trim is available with a choice of four interior design selections.



### Loft

The Krepp recycled pad, contrasting with The Krepp recycled seats and glossy black décor, gives the Loft interior a stylish contemporary feel.



### Lodge interior

Grey Suedia pad with copper décor  
Grey Suedia / black fabric upholstery

## Selection



### Lodge

The combination of grey Suedia pad and upholstery with copper décor and two-colour ambient lighting give the Lodge interior a feeling of luxury, underscored by the leather multifunction steering wheel, floor mats, and rear armrest.



### Dynamic interior

Black Suedia pad with red décor  
Black Suedia / black fabric upholstery

## Selection



### Dynamic

The centrepiece of the Dynamic interior are the sports seats, complemented by the sports steering wheel, black Suedia pad, and red décor. The black roof liner, sports pedal covers and door sills with "Scala" lettering complete the sporty theme.





### Suite interior

Black Suedia pad with chrome décor  
Black Suedia / black leather upholstery

## Selection



### Suite

The elegant style of the Suite interior starts with the black leather/Suedia and is further emphasised by the chrome décor and black Suedia pad. The leather steering wheel, heated front seats, and electric driver's seat complete the image of luxury.



### Monte Carlo

Carbon look pad with red décor  
Carbon look / black fabric upholstery

## Monte Carlo

The standard equipment of the Monte Carlo version includes Climatronic, auto dimming mirror, Drive Mode Select, Wireless SmartLink, 8-speaker stereo, Carbon look dashboard pad, ambient lightning, TOP LED Matrix headlights, LED fog lights with corner function and more.



### Monte Carlo

The unique style of the Monte Carlo version continues with the interior, highlights of which include the Carbon look sports seats with red accents, Carbon look dash pad and door inserts, sports steering wheel and pedals and black roof liner.

## Colours



Graphite Grey metallic



Brilliant Silver metallic



Steel Grey uni



Velvet Red metallic



Energy Blue uni



Candy White uni



Moon White metallic



Race Blue metallic



Magic Black metallic

## Wheels



18" Fornax silver alloy wheels



18" Ursa black alloy wheels, polished\*



18" Ursa silver alloy wheels with black Aero covers



17" Propus Aero black/silver alloy wheels, polished



17" Stratos silver alloy wheels



16" Cortadero Aero silver alloy wheel



18" Vega Aero black/silver alloy wheels, polished



17" Kajam black alloy wheels with black Aero covers\*



17" Kajam silver alloy wheels with black Aero covers



16" Montado Aero black/silver alloy wheels, polished



16" Nyota silver alloy wheels



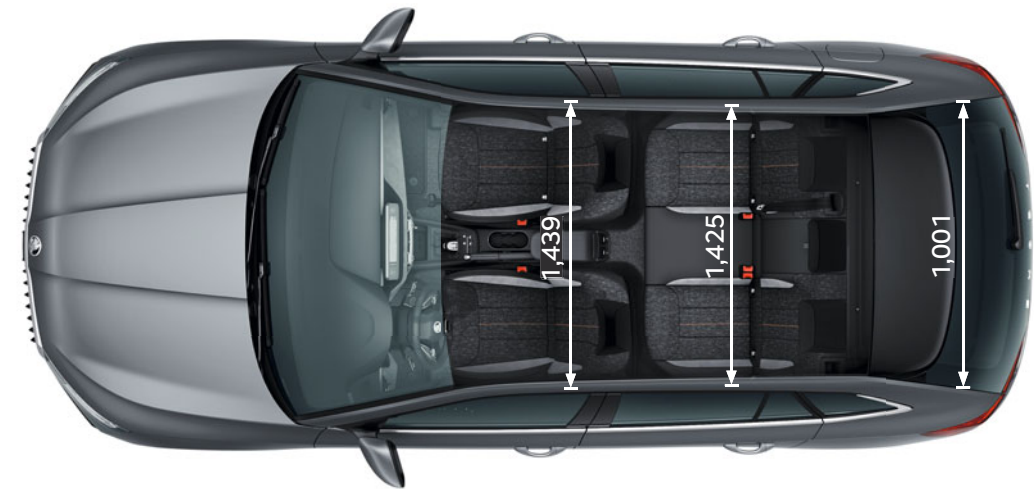
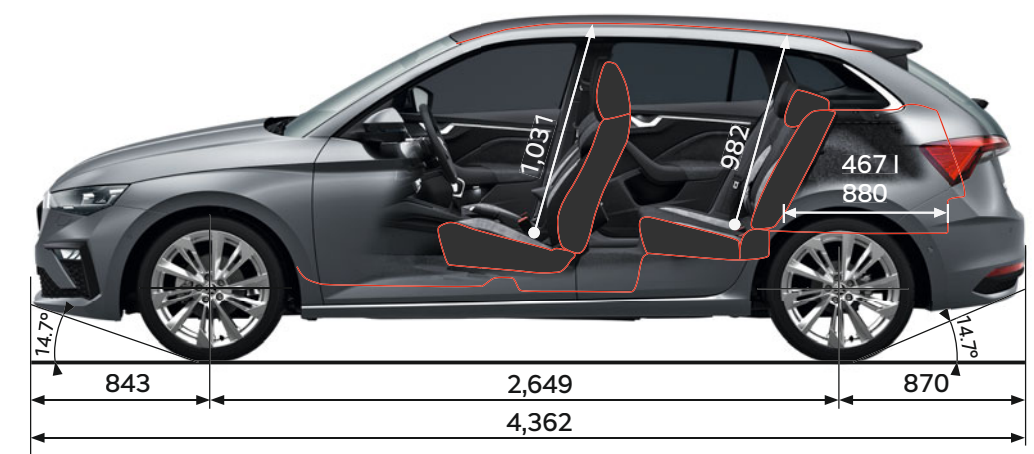
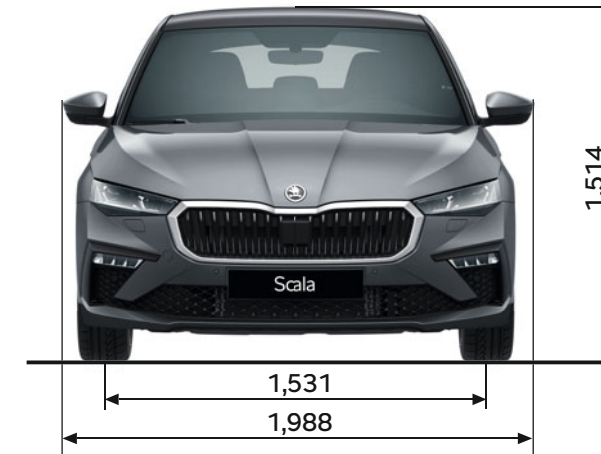
16" steel wheels with Tecton covers

\* Available for Monte Carlo models

Technical specifications	1.0 TSI/70 kW	1.0 TSI/85 kW	1.5 TSI/110 kW
	Turbocharged petrol engine	Turbocharged petrol engine	Turbocharged petrol engine
<b>Engine</b>			
Cylinders/Cubic capacity (cc)	3/999	3/999	4/1,498
Max. performance/Revs (kW/rpm)	70/5,000–5,500	85/5,500	110/5,000–6,000
Max. torque/Revs (Nm/rpm)	175/1,600–3,500	200/2,000–3,500	250/1,500–3,500
Air pollution regulation	EU6EB	EU6EB	EU6EB
Fuel	Petrol, RON min. 95	Petrol, RON min. 95	Petrol, RON min. 95
<b>Performance</b>			
Maximum speed (km/h)	192	202	221 (220)
Acceleration 0–100 km/h (s)	10.8	9.5 (10.1)	8.2
Fuel consumption WLTP (l/100 km) – combined	5.1–5.6	5.1–5.6 (5.3–5.8)	5.4–5.9
CO <sub>2</sub> emissions WLTP (g/km) – combined	115–126	115–126 (121–132)	122–133 (122–132)
<b>Power transmission</b>			
Type	Front-wheel drive	Front-wheel drive	Front-wheel drive
Transmission	Manual 5-speed	Manual 6-speed (Automatic 7-speed DSG)	Manual 6-speed (Automatic 7-speed DSG)
<b>Weight</b>			
Kerb weight – with 75 kg driver (kg)	1,201–1,363	1,218–1,388 (1,239–1,409)	1,261–1,423 (1,273–1,430)
Payload – incl. driver and extra equipment (kg)	375–492	375–492 (375–491)	375–491 (375–489)
Total weight (kg)	1,600–1,663	1,620–1,688 (1,640–1,709)	1,660–1,723 (1,670–1,730)
Trailer load without brakes (max. kg)	600	600 (610)	630
Trailer load with brakes – 12% (max. kg)	1,000	1,200	1,250
<b>Further specifications</b>			
Body		Front brakes	Disc brakes with inner cooling and with single-piston floating calliper
Type	5-seater, 5-door, 2-compartment	Rear brakes	Drum brakes; alternatively disc brakes depending on engine version
Turning circle diameter (m)	10.9	Clearance (mm)	149
Chassis		Luggage storage space (max. l)	
Front axle	McPherson suspension with lower triangular links and torsion stabiliser	Without spare tyre, with rear seat backrests – upright/down	467/1,410
Rear axle	Compound link crank-axle	Tank capacity (l)	50

WLTP – World harmonized light-duty vehicles test procedure.  
The weights depend on the equipment version of the car.  
( ) Applies to the version with automatic transmission.

Technical specifications and drawings apply to the Essence and Selection versions. The parameters for Monte Carlo cars may differ.  
For more information, contact your Škoda partner.



#### Image disclaimer

The images presented in this catalogue (brochure) are used for illustrative purposes only and are not intended to form part of any contract or warranty. They display pre-series cars and certain illustrations, features, parts and equipment may differ from the actual production cars and from country to country. To get the exact specification of features, parts and equipment, please get in touch with your nearest local Škoda dealer.

If you've enjoyed reading  
about it — imagine driving it.  
**Call us to arrange  
a test drive!**

06/2024

Your Škoda partner:



#### MyŠKODA App

Enjoy full control of your car. Download MyŠKODA App and access all necessary features anytime, whether it's driving data, fuel range, planning a route or even where you last parked.