

# ŠKODA KAROQ



**ŠKODA**  
SIMPLY CLEVER





**INTRODUCTION** <sub>4</sub>

**EXTERIOR DESIGN** <sub>6</sub>

**LIGHT DESIGN** <sub>12</sub>

**INTERIOR DESIGN** <sub>16</sub>

**CONNECTIVITY** <sub>22</sub>

**SIMPLY CLEVER** <sub>28</sub>

**LUGGAGE COMPARTMENT** <sub>36</sub>

**COMFORT** <sub>42</sub>

**SAFETY** <sub>48</sub>

**PERFORMANCE** <sub>60</sub>

**SCOUT** <sub>66</sub>

**SPORTLINE** <sub>70</sub>

**CUSTOMISATION** <sub>74</sub>

**ACCESSORIES** <sub>92</sub>

**TECHNICAL SPECIFICATIONS** <sub>102</sub>





## THE ALL-IN-ONE CAR FOR YOUR ALL-IN-ONE LIFE

A stylish compact SUV, the ŠKODA KAROQ is eager to accompany you on every adventure imaginable. Packed with state-of-the-art connectivity and safety systems, it can turn even an ordinary commute into a fashionable excursion. And being the embodiment of ŠKODA's crystalline design language, the KAROQ can turn the week into weekend with eloquent ease.

The KAROQ is yet another example of our philosophy of making beautifully designed cars that are as much a joy to drive now as they were back when we started.

That's Simply Clever. That's ŠKODA.





# EXTERIOR DESIGN



# FORM FOLLOWS FUN

Inspired by our heritage of Czech crystal, with its elegantly sculpted lines, our SUV bears the same levels of refinement. Its multi-purpose design ensures you look good on any adventure.



## FRONT VIEW

The KAROQ model with a typical ŠKODA grille evokes feelings of strength and safety. The front is dominated by sharply cut headlamps and fog lamps, which are located at the height of the grille confirming the car's off-road ambitions.



## SIDE VIEW

While the angular wheel arches and protective sill covers accentuate the car's SUV character, the continuous play of light and shadow defined by the ŠKODA design language puts emotion and grace into the KAROQ's appearance.





#### REAR VIEW

With the unmistakable ŠKODA inscription in the back, the car proudly declares its family. The distinctive wedged-shaped rear lights, also with the familiar C-shaped illumination, reference the Czech crystal glass-making tradition. The reflectors for better visibility of the car are situated deep in the rear bumper to protect them from damage. The KAROQ model also features the robust protective cover.



#### PANORAMIC SUNROOF

The electrically-adjustable panoramic roof window, which allows you to create a large open space above the front seats, will enhance the attractive look of the car and give more pleasure to all passengers. You can enjoy new vistas, as well as the feeling of freedom and space.



# LIGHT DESIGN





# LIGHT THE WAY

The evocative design lines of the KAROQ influence the exterior lights too. The top offering comes with a complete LED system without compromising on form and function.



**FULL LED HEADLAMPS WITH AFS AND FOG LAMPS**

Two types of headlamps and fog lamps are available for the KAROQ. The top-end option is all about LED technology. The LED headlamps offer high-performance and high energy efficiency. The AFS (Adaptive Frontlight System) adjusts the lighting intensity to specific conditions (e.g. city, motorway or driving in the rain), while the main headlamps boast an eye-catching integrated strip of LED daytime running lights. Under poor light conditions the LED fog lamps come into their own, ensuring your maximum safety.



**LED REAR LIGHTS**

Just like the remarkable rear lights, even the license plate is equipped with LEDs. Crystalline elements appear in the 'inactive' area of the rear lights.



**WELCOME LOGO**

The LEDs located on the underside of the front doors, creating the ŠKODA inscription, illuminates the entry area. This feature is always offered as part of the LED pack in combination with ambient lighting.





# INTERIOR DESIGN



# ACCESS MISSION CONTROL FOR ANY MISSION

We’ve turned the car into a cockpit. The beautiful, yet practical digital display takes all the information you need and puts it where you need it most – right in front of your eyes.



Classic view



Modern view



Extended view

## VIRTUAL COCKPIT

A perfect overview is provided by the Virtual Cockpit, which can display on-board computer specifications in combination with other information such as navigation, for example. You can choose from five layouts, controlled via the View button on the multifunctional steering wheel – Classic view, Modern view, Extended view, Basic view (suitable when driving at night or on the motorway) and Sport view.



Basic view



Sport view







# BEAUTY LIES IN DETAIL

Make your space even more cosy and comfortable with soft, harmonious LED ambient lights running along the inside of the car, setting the perfect mood for any journey.



**AMBIENT LIGHTING**  
It's up to you to choose a favourite colour or to complement each day with a different tone. The dashboard and front door LED ambient lighting, supplied as part of the LED pack, offers ten appealing colour options. The foot area illumination in white also comes with the LED pack.



Green ambient lighting



Blue ambient lighting



Red ambient lighting





# CONNECTIVITY



# ŠKODA CONNECT: CONNECT WITH ALL YOUR WORLDS

Stay connected wherever you are. Being fully and permanently online means not only having access to entertainment and information, but also possible assistance while on the move. ŠKODA Connect is your gateway to a world of unlimited communication possibilities.



**ŠKODA CONNECT**  
This offer includes two categories of service. While Infotainment Online delivers real-time information to navigation about traffic, for example, Care Connect focuses on help and safety, enabling remote access and control of the vehicle. It also offers an assistance service for any situation that needs it. These services are accessible within the MyŠKODA App.

**PARKING POSITION**  
Retrieve the exact location of your car in large car parks from anywhere, by displaying the address, time and date of parking on your mobile phone.



**DRIVING DATA**  
Information about your journey, such as average consumption, average speed, distance and journey time, is stored. You can display your personal driving data and have an overview of all your trips.

**ONLINE PERSONALIZATION**  
You will appreciate this service especially if your car is driven by multiple users. Set your comfortable seat position, digital dashboard layout or air conditioning parameters – the settings will be synchronized with your ŠKODA ID account. Therefore next time you log in to your car after it was driven by someone else, you can comfortably set off with your preferred settings. With online personalization, you can set your preferred settings not only in your car, but in any ŠKODA vehicle that allows it.



**eCALL+**  
An SOS call is made automatically in the event of an emergency on the road. The system can also be activated manually by pressing the red button on the roof console. With the eCALL+ feature, information such as the vehicle's location or the number of people in the vehicle is provided to the first responders.

**ONLINE TRAFFIC INFORMATION**  
Up-to-date information gives you a perfect overview of every trip. It also enables you to react to new developments, such as roadworks, accidents and traffic jams. Also, local hazard information will warn you in case any inconvenience occurs on your way, such as difficult conditions or limited visibility.



**SHOP / INFOTAINMENT APPS**  
Thanks to the shop accessible via the infotainment system, you can purchase data plans, extend your ŠKODA Connect licence, and download infotainment apps. For example, you can get a detailed weather report for your current location or anywhere else with the Weather app. Infotainment apps will be regularly updated and more apps will be added over time.



# TAKE THE ONLINE WORLD WITH YOU

Infotainment has moved on in leaps and bounds: You can look forward to an attractive design and plenty of amazing functions, while the KAROQ seamlessly syncs with your external devices. Better still, your kids will never get bored on a journey.

**MyŠKODA APP**

Have your vehicle always within your reach and enjoy its full control. Download MyŠKODA app and access all necessary features anytime, whether it's driving data, fuel range, planning a route or even where you last parked. Purchasing all or just some of these service packages will give your car a host new features, encompassing entertainment on the road, care and your safety.



**PHONE BOX / USB**

This practical phone compartment, located in front of the gear stick, creates an amplified signal for your mobile device. At the same time, it wirelessly charges your phone while driving. Two optional USB-C data slots located in the centre console allow you to easily connect and pair your external devices with the infotainment system, without any need for dongles or adapters. An additional USB-C slot, which is ideal for charging devices mounted on the windscreen, can be found in the roof panel.



**SMARTLINK**

With the SmartLink system (ŠKODA Connectivity bundle supporting MirrorLink®, Apple CarPlay, Android Auto) the car's infotainment system enables the driver to safely use the phone while driving. Plus, all installed applications that are certified as safe for vehicles are compatible with MirrorLink®, Apple CarPlay or Android Auto. The latter two are also available wirelessly. (For further information regarding wireless functionality, contact your ŠKODA partner. For usage terms and compatibility information for SmartLink, visit our website.)



**INFOTAINMENT**

The new generation of infotainment offers new functions. The top-end option comes with the Columbus 9.2" (shown) and Amundsen 8" infotainment systems with navigation. In addition to the touch or gesture control, you can operate the devices via Laura, the digital assistant. This new enhanced and online-based voice control system can answer queries about a wide variety of topics and follows commands. For example, it will start navigation to a desired destination, find a favourite piece of music or take dictation for an SMS. The Web radio feature also comes as a bundle in combination with the Columbus and Amundsen infotainment systems. It allows you to expand the usual portfolio of conventional stations with your other favourite channels, podcasts, and news. You can tune in and listen in high quality to any radio streaming service in an area covered by the Internet.

**CANTON SOUND SYSTEM**

Enjoy absolute sound clarity, whether it's music or the spoken word, on the Canton Sound System with ten speakers, including a speaker in the dashboard and subwoofer in the luggage compartment. The total power output is 575 Watts.



# SIMPLY CLEVER





# PACK A LOT IN

Take a look inside and you'll find plenty of storage spaces and compartments. There is a place for everything and everything in its place – phones, glasses, refreshments and all your other daily essentials.



**GLOVE COMPARTMENT**  
Thanks to the closed storage compartment in the lower part of the dashboard by the front passenger, which can be air-conditioned, you have, for instance, a place to store pleasantly chilled refreshments during your travels.



**JUMBO BOX**  
The spacious storage compartment is housed in the front armrest. You can, for example, store your electronic items safely inside. The Jumbo Box can also be equipped with a coin holder and two drinks holders with Easy Open function.



**UNIBAG**  
When using the removable Unibag designed for transporting skis or a snowboard, you can fold down the middle seat's backrest, while maintaining comfortable rear seating for two passengers.





**FOLDABLE BACKREST**  
The foldable backrest of the front passenger seat gives the car even greater variability and allows you to transport objects with extraordinary dimensions.



**FOLDABLE TABLES**  
Built into the backrests of both front seats, the foldable tables with drink holders can be used for more than just refreshments.



**FRONT DOOR COMPARTMENTS**  
You will find a 1.5-l bottle holder and a rubber strap in a spacious compartment in the front door. This is also where you can place a removable waste basket.



**REFLECTIVE VESTS**  
The vests can be located in the storage compartments in the front and rear doors, ensuring they are always within reach.



# GAIN HANDS-FREE ACCESS

No more awkward moves trying to open the boot when you have your your hands full. Now loading your luggage or folding a towing device can be simple, and even fun.



**VIRTUAL PEDAL**  
How do you open or close the luggage compartment when your hands are full? Just swipe your foot underneath and, hey presto, it will open or close for you automatically. The virtual pedal enables contact-free access and is available exclusively with the electrically controlled 5th door and KESSY (Keyless Entry, Start and exit System).

**ELECTRICALLY CONTROLLED 5<sup>TH</sup> DOOR**  
It opens and closes at the mere touch of a button on the remote control or in the driver's door, especially handy in unfavourable weather. You can also adjust the upper door position to suit your needs. A button for closing the 5th door is also located on the door itself.



**TOWING DEVICE**  
The KAROQ can be equipped with a folding towing device with electric release. The car has a towing capacity of up to 2.1 tons (depending on the engine and type of trailer).

**ROLL COVER**  
Easy access to your luggage is provided by the roll cover, which can be fixed to the 5<sup>th</sup> door. When you open this door, the cover lifts with it.



**TOWING DEVICE CONTROL**  
The switch for the folding towing device, located in the luggage compartment, is a small detail that will make your life much easier.





# LUGGAGE COMPARTMENT



# LET YOUR LUGGAGE ROCK, NOT ROLL

The KAROQ's luggage compartment features a lot of space and practical elements, which help keep the car tidy and prevent things from moving around. The car with standard rear seats (featuring 40/60 folding split) offers 521/1,630 litres of luggage space. The rear seats can also be folded using a remote release button located in the luggage compartment.



Luggage Compartment

## HOOKS

The robust foldable hooks, located on the sides of the luggage compartment, make your bags easier to transport and more secure.



## CARGO ELEMENTS

To avoid any undesired movement of luggage while driving, these are stowed away in the compartments behind the rear wheel arches when not in use.



## DOUBLE-SIDED CARPET

You can use the carpet with the elegant fabric side up when not transporting anything that might make your car dirty, and can easily turn it over to utilise the washable rubber side when required.



## DOUBLE FLOOR

The double floor places the bottom of the luggage compartment on the loading edge level, facilitating easier luggage handling. In addition, it provides a discrete storage place.



## NET PROGRAMME

One horizontal and two vertical nets increase the flexibility of the luggage space while firmly securing objects.

Luggage Compartment



# LIKE YOGA FOR CAR SEATS

The VarioFlex rear seating system is comprised of three separate rear seats. You can fold down each one independently, as well as remove them completely. With the seats folded down, you gain a luggage area with a capacity of 1,605 litres, and 1,810 litres by removing them.

If you need to maintain rear seating for passengers, you can fold down a single backrest.



Another option is to fold down one of the outer rear seats along with the middle rear seat.

To enlarge the luggage area, you can tilt all the rear seats towards the front seats. This position also allows you to remove them easily.



One of the many possible options is to remove the middle rear seat. This can be done single-handedly and does not require the use of any tools.





# COMFORT





# EVERYTHING AT YOUR FINGERTIPS

Even a tiny button can hide a sophisticated system with incredible utility. Using advanced technology, comfortable elements provide a more enjoyable drive as well as a safer one.



**STEERING WHEEL WITH HEATING**

The multifunctional leather steering wheel, which lets you control the radio, phone and alternatively DSG, can be equipped with heating function, controlled via the infotainment system.

**AREA VIEW**

You will feel much more confident behind the steering wheel with four cameras that sense the space around the entire vehicle. They are located in the front grill, external side-view mirrors and on the handle of the 5th door. The picture is transmitted in real time to the infotainment display so you can react quicker to whatever comes your way.



**CRUISE CONTROL**

In addition to maintaining the preselected speed, cruise control enables you to increase or reduce speed without using the pedals.



**3-ZONE CLIMATRONIC**

With this state-of-the-art air conditioning system, you can set different temperatures for the driver, co-driver and rear passengers. It's also fitted with a humidity sensor, which reduces windscreen misting, and sun sensor.



**DRIVER SEAT WITH BUILT-IN MEMORY**

The electrically-adjustable driver seat with built-in memory can store three different seat and external side-view mirror positions.





**LED BOARDING SPOTS**  
The boarding spots with LEDs, designed to illuminate the entry area, are located on the external side-view mirrors.

**RETRACTABLE MIRRORS**  
The automatically retractable external side-view mirrors fold in when the car is locked, thus protecting them against damage.



**HEADLAMP WASHERS**  
Integrated telescopic headlamp washers easily take care of dust and mud.



**REAR PART OF THE JUMBO BOX**  
On the rear part of the Jumbo Box you can find a 230 V socket and USC-C slot. In the car equipped with 3-zone Climatronic air conditioning, you will also find the control for the rear seat zone here.



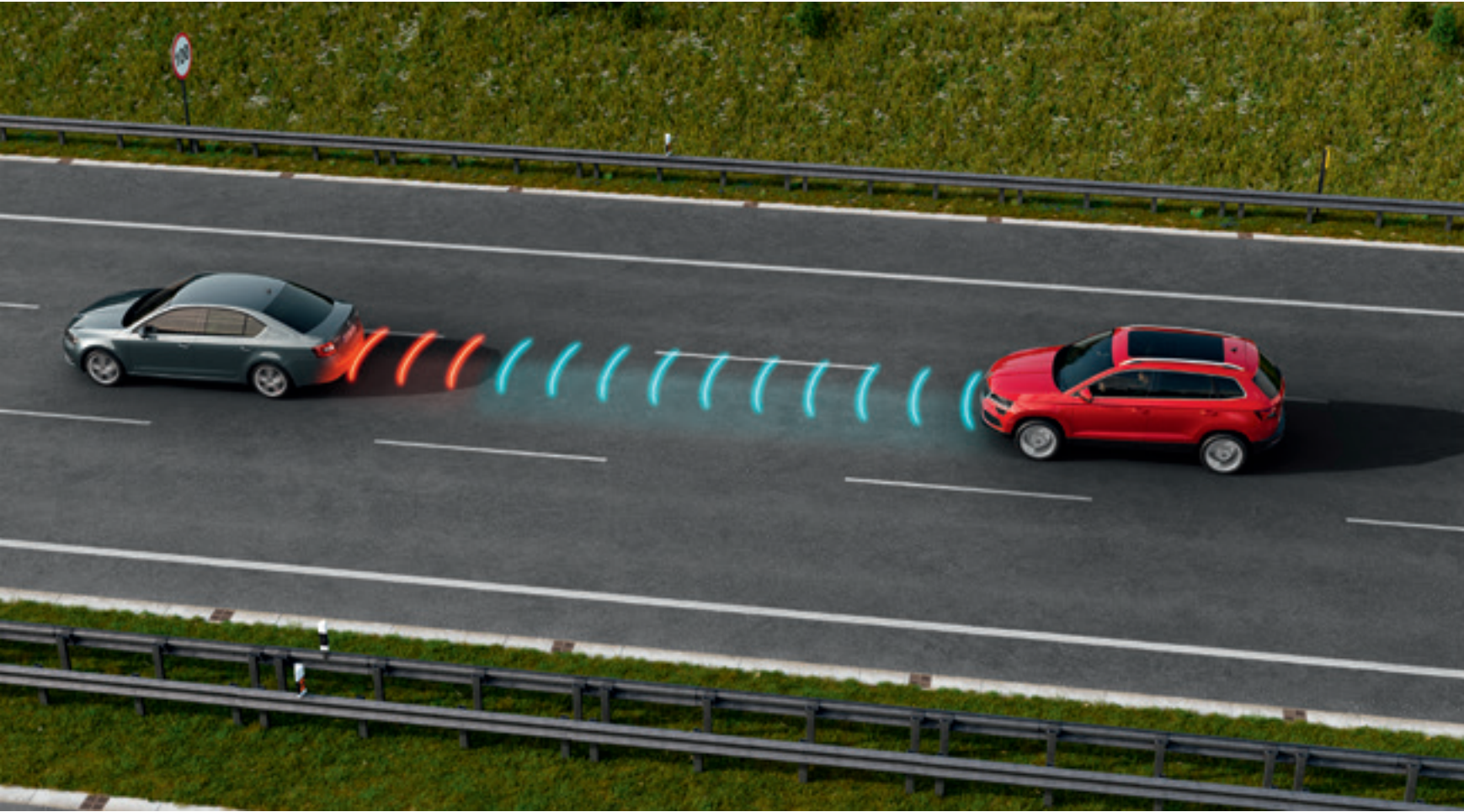
# SAFETY





# TRAVEL ASSIST

The Travel Assist system as well as its higher version combine the functions of several assistants and ensure that you feel safe and comfortable, no matter where you drive. For maximum safety, the system must be constantly monitored by the driver. That's why a capacitive steering wheel detects the driver's tactility, providing an interactive interface to the system. If the driver is not engaged in driving, this behaviour is detected by the capacitive steering wheel.



**PREDICTIVE ADAPTIVE CRUISE CONTROL**

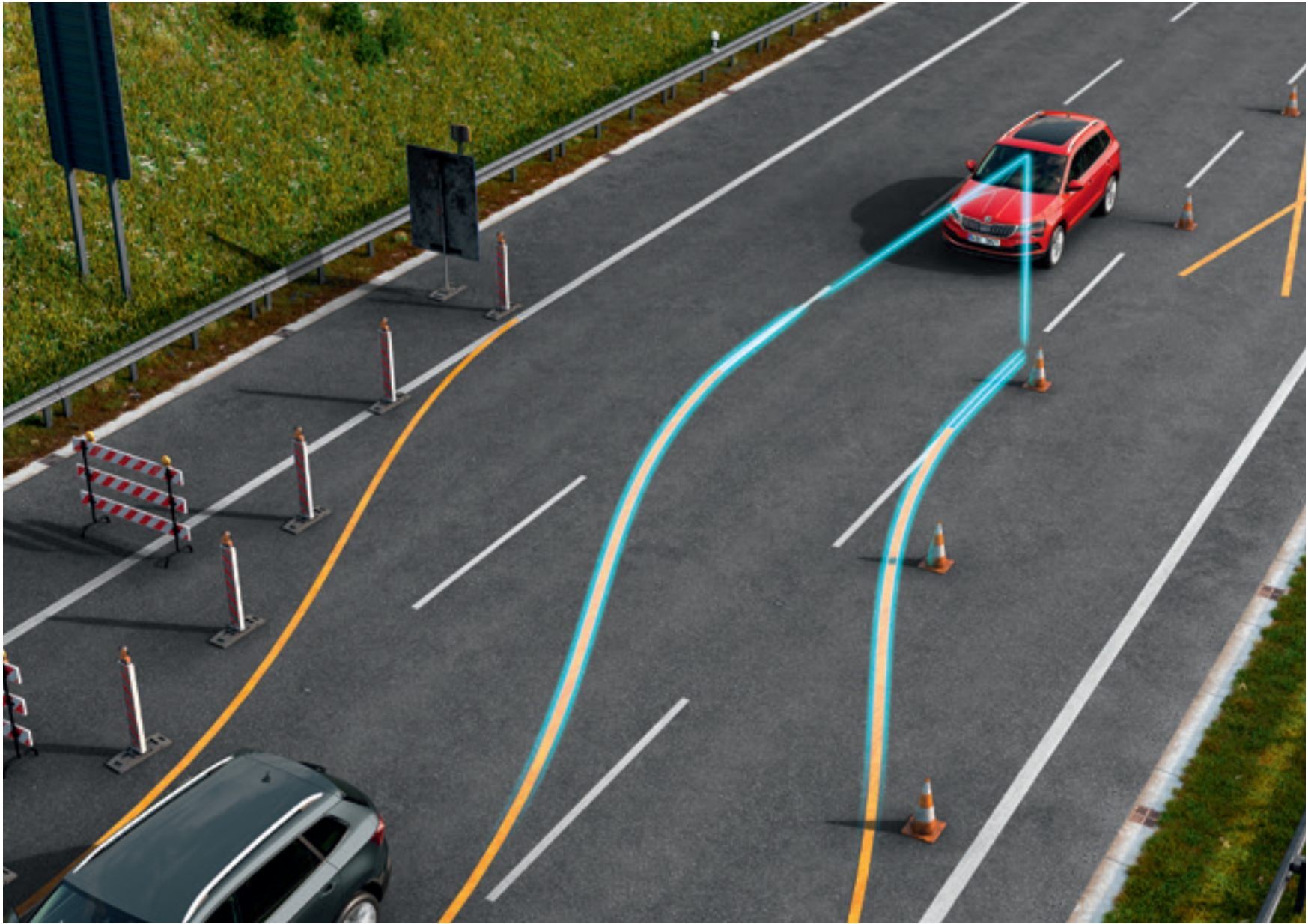
Using a radar device, camera equipped with traffic sign recognition, GPS technology and detailed information from the road map, pACC can predict driving conditions for the next 1 - 2 km. As a result, the system can automatically adjust the cruise speed when necessary – typically before a turn or roundabout, or when entering an area with a reduced speed limit. The system increases driver comfort and driver safety while also reducing fuel consumption and CO<sub>2</sub> emissions.



**TRAFFIC JAM ASSIST / FOLLOW DRIVE**

This function is designed to facilitate driving in traffic jams. By controlling the engine, brakes, and steering, it makes the vehicle pull away, brake, and turn to copy the movement of the surrounding vehicles (at speeds of up to 60 km/h). If lanes are not detected at speeds of up to 30 km/h, or only one lane (line) is detected at speeds of up to 60 km/h, the Follow Drive system follows the trajectory of the vehicle in front of you until lane markings are available again.



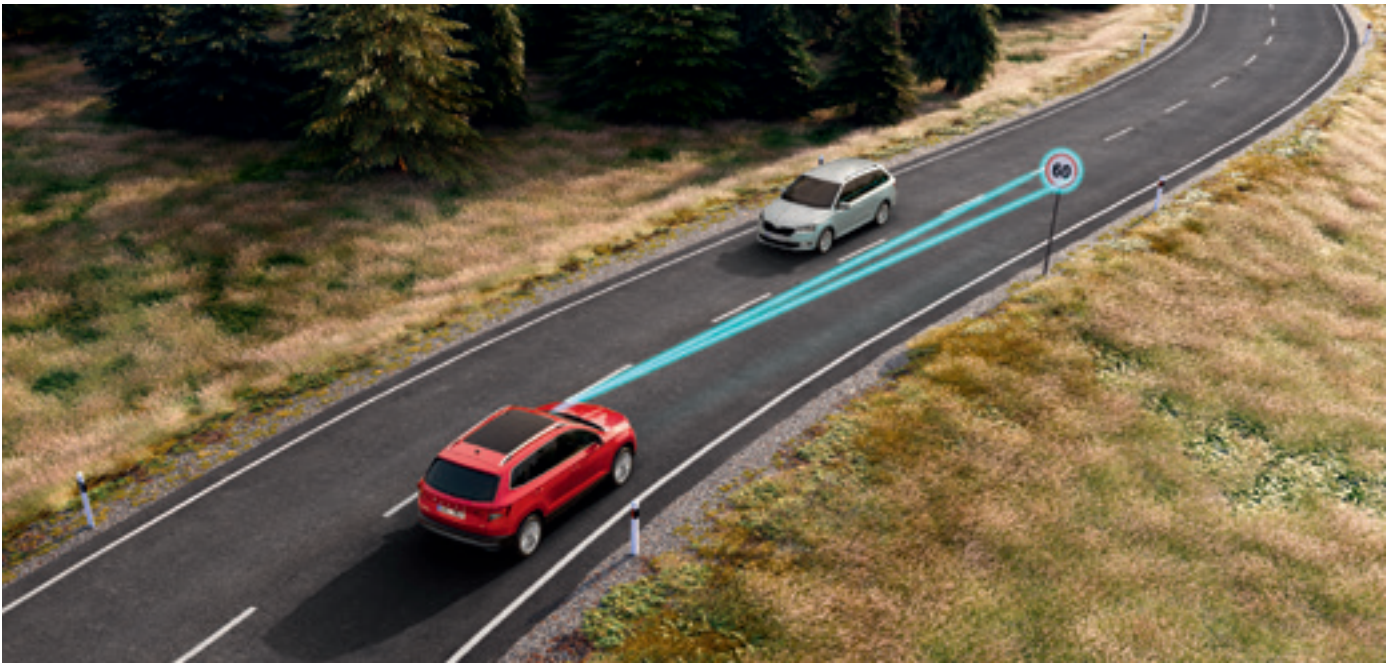


**LANE ASSIST+**  
The system is capable of keeping the car in the middle of the correct lane and of alerting the driver in case of deviation. It can also take control of the car in the event of lane changes during roadworks.

**EMERGENCY ASSIST**  
Emergency Assist reduces the risk of an incident in the event of the driver's sudden health collapse, for example, by safely stopping the car and turning on the warning lights.



**TRAFFIC SIGN RECOGNITION**  
The system uses the camera in the rear-view mirror to scan the traffic signs on the current stretch of road and notify the driver of traffic signs. The system is able to identify signs on both the left and right sides, as well as above the road. Moreover, it is also able to identify variable traffic signs (electronic information boards).





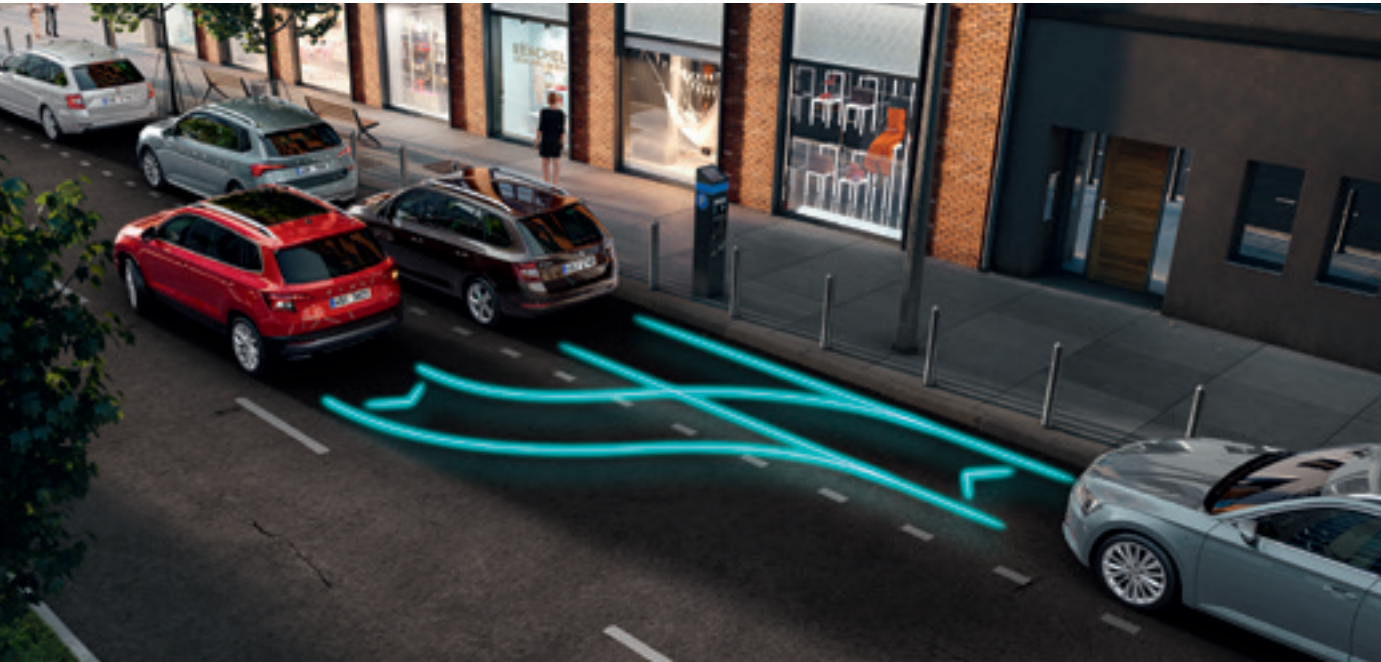


**SIDE ASSIST**  
Using radar sensors in the rear bumper, Side Assist (which can detect other vehicles and harder to see objects like cyclists up to 70 m away) monitors the areas behind and beside your car. Based on the distance and speed of the surrounding vehicles, it decides whether or not it should warn the driver.

**REAR TRAFFIC ALERT**  
The system warns the driver of rear traffic as they pull away from a row of perpendicularly parked vehicles (visually on the infotainment display/ onboard computer display or acoustically), or, if the case so requires, intervenes proactively, i.e., stops the car.



**PARK ASSIST**  
Minimise the hassle of parking in tight spots with Park Assist. It automatically selects an appropriate parking place in a row of parallel or perpendicularly parked vehicles.



The Side Assist, Rear Traffic Alert, and Park Assist come as part of the Travel Assist higher version.



# ADDITIONAL EXPERTS ON BOARD



**AUTO LIGHT ASSIST**  
Your Light Assist will switch to high beam and back automatically, increasing comfort and safety in traffic.

You can encounter various things on the road. To ensure that the car is ready to handle all situations that may occur en route, additional assistants with multiple functions are on hand to help or fill in for the driver.

**CREW PROTECT ASSIST**  
This assistance system provides increased protection for front-seat passengers in critical situations that could lead to a crash or overturning by closing the side windows to leave only a 5 cm gap, shutting the roof window, and tightening seatbelts.



**MULTI-COLLISION BRAKE**  
In case of an accident, the Multi-Collision Brake starts braking to prevent further uncontrolled movement of the vehicle, thus reducing the likelihood of further collisions.





# EXPERIENCE 360-DEGREE PROTECTION

In extreme situations, where the driver cannot actively influence the outcome, the car's passive safety elements take over – like the airbags. You can have your car equipped with up to nine of them.



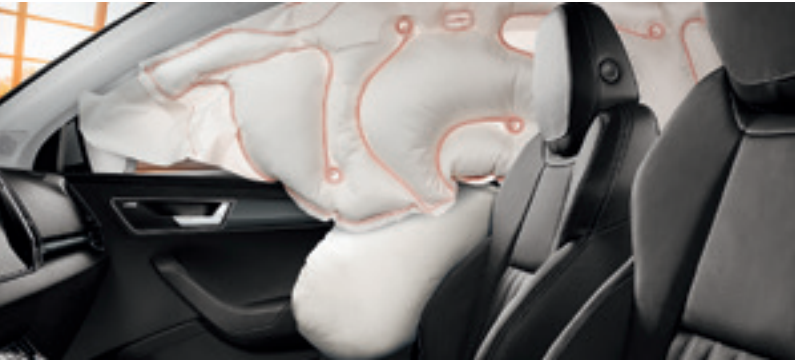
**FRONT AIRBAGS**  
While the driver airbag is enclosed in the steering wheel, the passenger airbag is located in the dashboard. If needed, this can be deactivated when a child seat is installed on the front seat.



**HEAD AIRBAGS**  
Upon activation, head airbags create a wall protecting the front and rear occupants against head injury.



**ELECTRIC CHILD SAFETY LOCK**  
Just one push of a button and your children's journey will be even safer. The child safety lock will prevent them from opening the rear windows and doors.



**FRONT AND REAR SIDE AIRBAGS**  
These four airbags protect the pelvis and chest of the driver and other passengers in the event of a side collision.





# PERFORMANCE





# PERFORM ON ANY STAGE

All engines on offer have a lot in common. They are modern, dynamic and economical. This makes the KAROQ feel as much at home in the city as it is in the wild.



**DYNAMIC CHASSIS CONTROL**

The Dynamic Chassis Control (DCC) continuously evaluates and responds to various driving situations (braking, acceleration, turning), adapting the damping and steering characteristics. DCC always comes in combination with Driving Mode Select and allows you to choose Comfort, Normal or Sport mode.

**PROGRESSIVE STEERING**

The impressive handling of the car is further enhanced with progressive steering. Requiring smaller steering input by the driver results in a much more dynamic driving experience, especially in the corners.



**ENGINES**

If you prefer petrol engines, you can choose between 81 kW and 110 kW. The 4-cylinder 110 kW engine features ACT (Active Cylinder Technology), which disconnects two cylinders when not needed, significantly reducing fuel consumption. The diesel engines on offer are 85 kW and 110 kW.



# GET A GRIP ON ANY TRIP

Whether you're crossing mountain trails or zigzagging through city streets, the KAROQ will keep you glued to the road. Just fasten your seat belts, select the driving mode and conquer the terrain below you.



**ALL-WHEEL DRIVE**

The 4x4 drive is provided by an electronically controlled inter-axle clutch. The coupling of the rear axle is automatic, so under normal conditions the car can utilise the advantages of front-wheel drive, and under extreme conditions the excellent traction of the 4x4 drive. For an extraordinary driving experience and comfort, the 4x4 drive comes exclusively in combination with an automatic 7-speed DSG.

**OFF-ROAD MODE**

With the intelligent Off-Road Mode system, which is available for the 4x4 version, you can handle even extreme terrain. It is designed to adjust the characteristics of the engine, electronic assistants and stability control systems. The activated functions are shown on the infotainment display.





# scout





# NO CHINKS IN THIS ARMOUR

The KAROQ SCOUT is ready for any road, or the lack of one. This is made possible thanks to the rough road package which includes, for example, engine and transmission protection, allowing you to go off paved roads without fear.



**BADGE**  
The car features the original Scout badge on both front wings.



**STYLE AND FUNCTIONALITY**  
The KAROQ SCOUT's determined look is styled by elements in silver, like the lower part of the door sill covers, the add-on part on the front and rear bumper, the diffuser, roof railings, external side-view mirror caps as well as the chrome strips around the side windows. The distinctive exterior is underlined with unique 18" Braga or optional 19" Crater (shown) anthracite alloy wheels. The car is available with both 4x4 drive and front wheel drive.

**INTERIOR DESIGN**  
The interior features sophisticated fabric upholstery in a combination of black and brown. You can also opt for the upholstery in a combination of black Suedia/leather/leatherette or black leather/leatherette. The Scout logo is embroidered on the seat backrests. Thanks to the side support provided on the front seats, you can enjoy maximum comfort while driving on any kind of terrain.





# SPORTLINE





# BORROW SOME RACING GENES

Sporty appearance meets sporty character. The KAROQ SPORTLINE will not only attract you with its distinctive exterior and dark tuned interior, but will also add a sporty edge to the driving experience.



## BADGE

The car features the original SportLine badge on both front wings.



## STYLE AND FUNCTIONALITY

The specific features such as black external side-view mirror caps, black front grille frame and rear diffuser, door sill covers in both the body colour and exclusive 18" Mytikas or optional 19" Vega (shown) black alloy wheels, give the car a distinctive sporty look combining the multi-purpose KAROQ design with high dynamic style.

## INTERIOR DESIGN

The interior features front sports seats with integrated headrests and lumbar support. The black fabric upholstery with ThermoFlux function, which ensures more breathability, offers maximum comfort in all climates. You can also opt for the upholstery in a combination of black Suedia/ leather/leatherette or black leather/leatherette. The Carbon décor in the door panelling and black ceiling enhance the interior sports style.





# CUSTOMISATION





# ACTIVE

The standard equipment of the Active version includes external side-view mirrors (electrically-adjustable) and door handles in black, remote controlled central locking, LED daytime running lights, LED rear lights, 2-spoke multifunctional leather steering wheel, leather gear stick knob, interior door handles in chrome, Swing 6.5" infotainment, Maxi DOT, USB-C, electrically-controlled front and rear windows, air conditioning, plus more.



**ACTIVE BLACK INTERIOR**  
Grainy Diamont décor  
Fabric upholstery



**ACTIVE BLACK INTERIOR**  
Grainy Diamont décor  
Fabric upholstery



# AMBITION

The standard equipment of the Ambition version includes external side-view mirrors and door handles in body colour, black roof railings, KESSY GO (for keyless switching on and off of the engine), Jumbo Box, umbrella storage compartments in the front, net programme in the luggage compartment, plus more.



**AMBITION SPORTS SEATS  
BLACK-WHITE INTERIOR**  
Graphite Grey/Cool Brushed décor  
Fabric upholstery\*



**AMBITION SPORTS SEATS  
BLACK-WHITE INTERIOR**  
Graphite Grey/Cool Brushed décor  
Fabric upholstery\*

\* Sports seats also available for Style version.



**AMBITION FABRIC/LEATHER  
BLACK INTERIOR**  
Chrome/Dark Brushed décor  
Fabric/leather/leatherette upholstery



**AMBITION BLACK-GREY INTERIOR**  
Chrome/Dark Brushed décor  
Fabric upholstery



**AMBITION SUEZIA BLACK INTERIOR**  
Graphite Grey/Cool Brushed décor  
Suedia fabric/leather/leatherette upholstery



**AMBITION SPORTS SEATS  
BLACK-RED INTERIOR**  
Chrome/Dark Brushed décor  
Fabric upholstery\*



# STYLE

The standard equipment of the Style version includes chrome side window frames, lumbar support for front seats, Climatronic dual-zone air conditioning, diffused lighting and more.



**STYLE LEATHER BLACK INTERIOR**  
Chrome/Dark Brushed décor  
Leather/leatherette upholstery



**STYLE LEATHER BLACK INTERIOR**  
Chrome/Dark Brushed décor  
Leather/leatherette upholstery\*



**STYLE BLACK INTERIOR**  
Chrome/Dark Brushed décor  
Fabric upholstery



**STYLE BEIGE INTERIOR**  
Piano Black/Dark Waves décor  
Fabric upholstery, black ceiling



**STYLE LEATHER BEIGE INTERIOR**  
Piano Black/Dark Waves décor  
Leather/leatherette upholstery, black ceiling



**STYLE SUEZIA BLACK INTERIOR**  
Chrome/Dark Brushed décor  
Suedia fabric/leather/leatherette upholstery



**STYLE FABRIC/LEATHER BLACK INTERIOR**  
Chrome/Dark Brushed décor  
Fabric/leather/leatherette upholstery

\* Leather/leatherette Black seats also available for Ambition version.



# SCOUT

A host of modern equipment awaits you inside the KAROQ SCOUT. It includes, among other things, the multifunctional leather steering wheel, which enhances your driving pleasure. LED ambient lighting with ten appealing colour options sets the perfect mood for any journey. In addition, you can opt for the Virtual Cockpit and the Columbus 9.2" infotainment system.



**SCOUT BLACK INTERIOR**  
Piano Black/Ash Brown décor  
Fabric upholstery



**SCOUT BLACK INTERIOR**  
Piano Black/Ash Brown décor  
Fabric upholstery



# SPORTLINE

The KAROQ SPORTLINE is ready to spoil you. The sports multifunctional steering wheel in perforated leather is decorated with silver stitching, which you can also find on the front armrest. The LED ambient lights running along the inside of the car will set the perfect mood for any journey. In addition, you can opt for the Virtual Cockpit with specific graphics for the SportLine version and Columbus 9.2" infotainment system.



**SPORTLINE BLACK INTERIOR**  
Piano Black/Carbon décor  
Fabric upholstery with ThermoFlux  
function, black ceiling

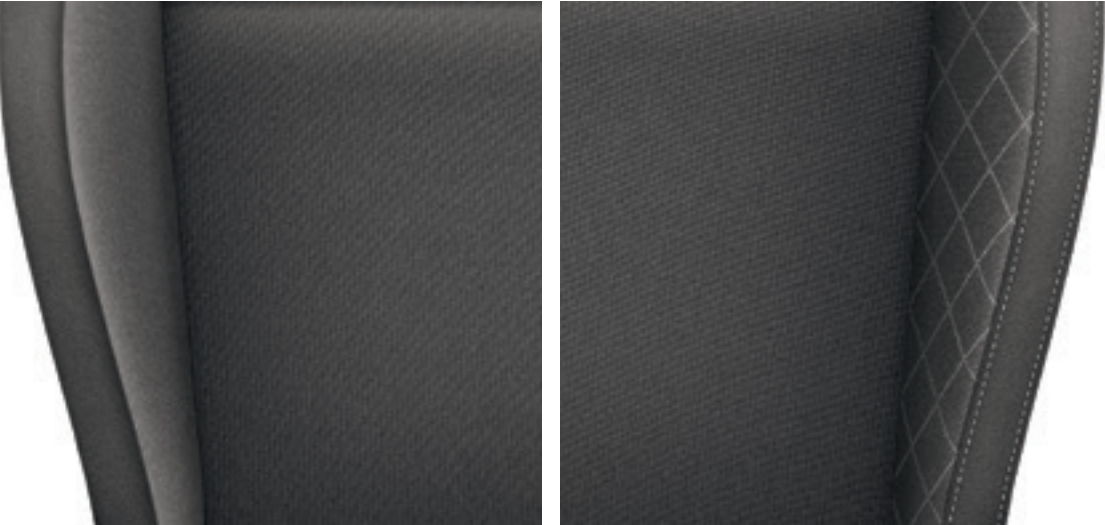


**SPORTLINE BLACK INTERIOR**  
Piano Black/Carbon décor  
Fabric upholstery with ThermoFlux  
function, black ceiling



# UPHOLSTERY

Fabric Black – Active



Fabric Black/Leather/leatherette Black – Ambition\*, Style\*



Fabric Black/Fabric Grey pattern – Ambition



Fabric Black-White stripes/Fabric Black, sports seats – Ambition\*, Style\*



Fabric Black – Style



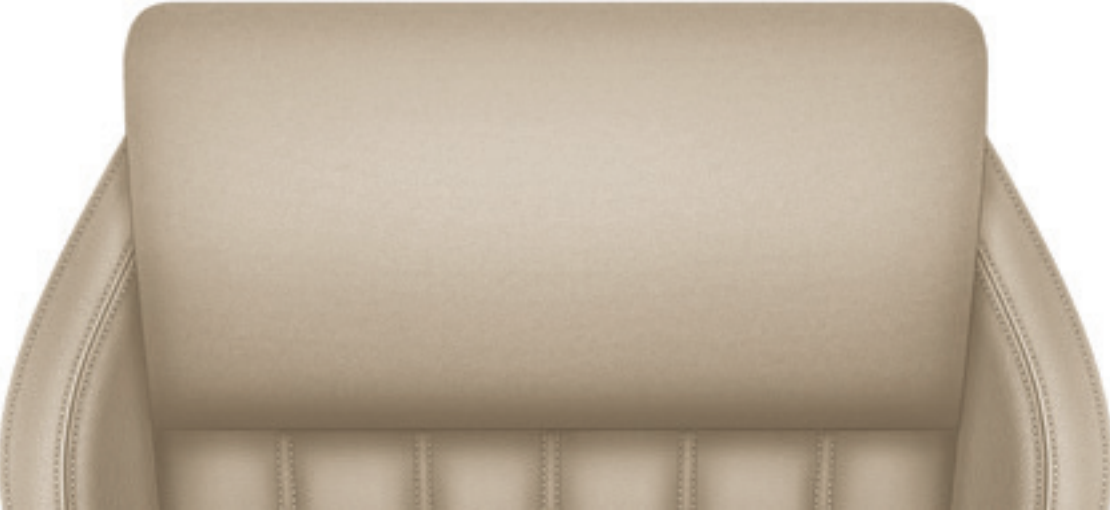
Fabric Beige/Fabric Black – Style



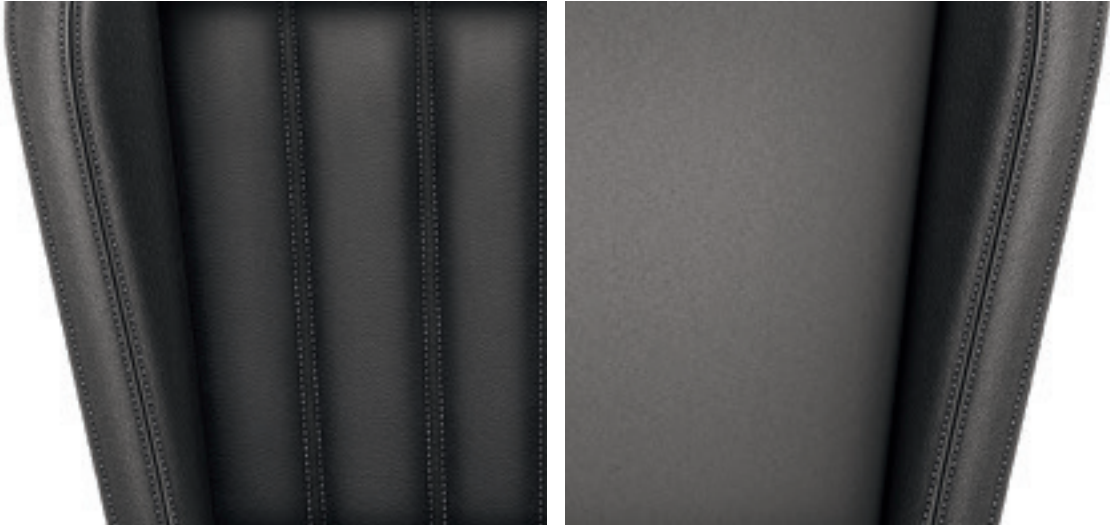
Fabric Black-Red stripes/Fabric Black, sports seats – Ambition\*, Style\*  
Leather/leatherette Black – Ambition\*, Style\*



Leather/leatherette Beige – Style\*



Suedia fabric Black/Leather/leatherette Black – Ambition\*, Style\*



\* Optional extra.



# COLOURS



STEEL GREY UNI



CANDY WHITE UNI



MOON WHITE METALLIC



BRILLIANT SILVER METALLIC



BUSINESS GREY METALLIC



QUARTZ GREY METALLIC



VELVET RED METALLIC



RACE BLUE METALLIC



EMERALD GREEN METALLIC



MAGNETIC BROWN METALLIC



LAVA BLUE METALLIC



ENERGY BLUE UNI



MAGIC BLACK METALLIC



# WHEELS

19" VEGA black alloy wheels, polished\*



19" CRATER alloy wheels



19" CRATER anthracite alloy wheels, polished\*\*



18" PROCYON alloy wheels with anthracite Aero covers



18" PROCYON alloy wheels with black Aero covers



18" PROCYON alloy wheels with black matt Aero covers



18" MYTIKAS alloy wheels



18" MYTIKAS black alloy wheels\*



18" BRAGA alloy wheels



18" BRAGA anthracite alloy wheels, polished\*\*



18" TRINITY anthracite alloy wheels, polished



17" RATIKON alloy wheels



17" TRITON alloy wheels



16" CASTOR alloy wheels



16" BORNEO steel wheels with covers



\* Exclusively for the SportLine version.  
\*\* Exclusively for the Scout version.



TECHNICAL SPECIFICATIONS	1.0 TSI/81 kW	1.5 TSI/110 kW	2.0 TDI/85 kW	2.0 TDI/110 kW	2.0 TDI/110 kW 4x4
	Turbocharged petrol engine	Turbocharged petrol engine	Turbocharged diesel engine	Turbocharged diesel engine	Turbocharged diesel engine
ENGINE					
Cylinders/Cubic capacity (cc)	3/999	4/1,498	4/1,968	4/1,968	4/1,968
Max. performance/Revs (kW/rpm)	81/5,500	110/5,000–6,000	85/2,750–4,250 (85/3,250–4,250)	110/3,250–4,200	110/3,000–4,200
Max. torque/Revs (Nm/rpm)	200/2,000–3,000	250/1,500–3,500	300/1,600–2,500 (250/1,500–3,250)	340/1,600–3,000	360/1,600–2,750
Air pollution regulation	EU6AP	EU6AP	EU6AP	EU6AP	EU6AP
Fuel	Petrol, RON min. 95	Petrol, RON min. 95	Diesel	Diesel	Diesel
PERFORMANCE					
Maximum speed (km/h)	187	207 (206)	190 (189)	207	199
Acceleration 0–100 km/h (s)	11.1	8.9 (9.0)	10.6 (11.0)	8.8	8.7
Fuel consumption (l/100 km)					
– urban	6.5–6.7	6.5–6.7 (6.4–6.6)	5.5–5.8 (5.4–5.7)	5.5–5.8	5.6–5.8
– extra-urban	4.4–4.7	4.5–4.8 (4.5–4.6)	3.8–4.8 (3.6–3.7)	3.7–3.8	4.2–4.4
– combined	5.2–5.4	5.3–5.5 (5.2–5.3)	4.3–4.5 (4.1–4.2)	4.3–4.5	4.7–4.9
CO <sub>2</sub> emissions (g/km) – combined	119–124	120–126 (119–120)	114–119 (109–111)	114–118	123–129
Fuel consumption WLTP* (l/100 km)					
– low	–	–	–	–	–
– medium	–	–	–	–	–
– high	–	–	–	–	–
– extra high	–	–	–	–	–
– combined	–	–	–	–	–
CO <sub>2</sub> emissions WLTP* (g/km)					
– low	–	–	–	–	–
– medium	–	–	–	–	–
– high	–	–	–	–	–
– extra high	–	–	–	–	–
– combined	–	–	–	–	–
POWER TRANSMISSION					
Type	Front-wheel drive	Front-wheel drive	Front-wheel drive	Front-wheel drive	4x4
Clutch	Hydraulic single-disc clutch	Hydraulic single-disc clutch (Twin coaxial clutch, electro-hydraulically operated)	Hydraulic single-disc clutch (Twin coaxial clutch, electro-hydraulically operated)	Hydraulic single-disc clutch	Twin coaxial clutch, electro-hydraulically operated
Transmission	Manual 6-speed	Manual 6-speed (Automatic 7-speed DSG)	Manual 6-speed (Automatic 7-speed DSG)	Manual 6-speed	Automatic 7-speed DSG
WEIGHT					
Kerb weight – in standard version with 75 kg driver (kg)	1,340	1,380 (1,387)	1,458 (1,465)	1,459	1,586
Payload – incl. driver and extra equipment (kg)	375–609	375–615 (378–618)	375–615	376–616	489–675
Total weight (kg)**	1,866–1,880	1,920 (1,930)	1,998 (2,005)	2,000	2,133–2,240
Trailer load without brakes (max. kg)	670	690	720 (730)	720	750
Trailer load with brakes – 12% (max. kg)	1,200	1,500	1,500	1,800	2,100

\* Specifications measured according to the WLTP (World harmonized light-duty vehicles test procedure) will be provided by importers.

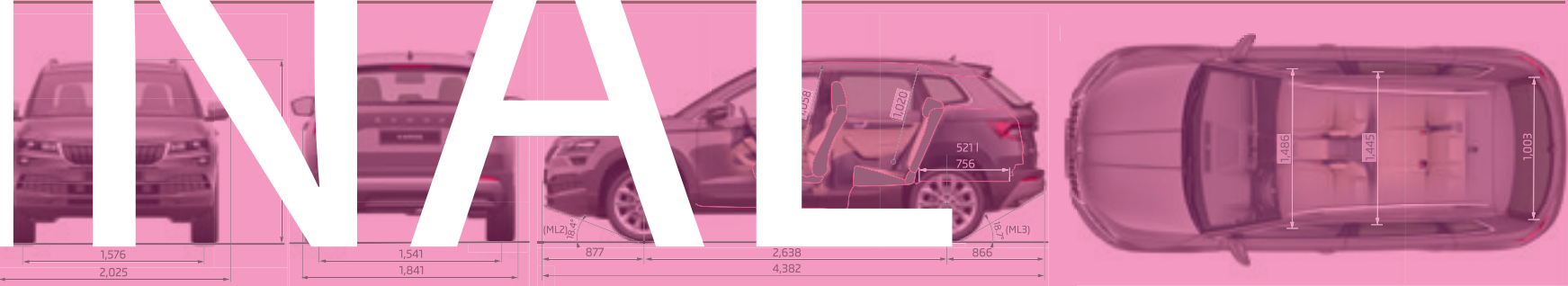
( ) Applies to versions with automatic transmission.  
\*\* According to equipment.

All diesel engines use Selective Catalytic Reduction. This system injects AdBlue® to reduce mono-nitrogen oxides (NO<sub>x</sub>). The volume of the AdBlue® tank is 12 litres (according to engine version) and consumption depends on the driving style.

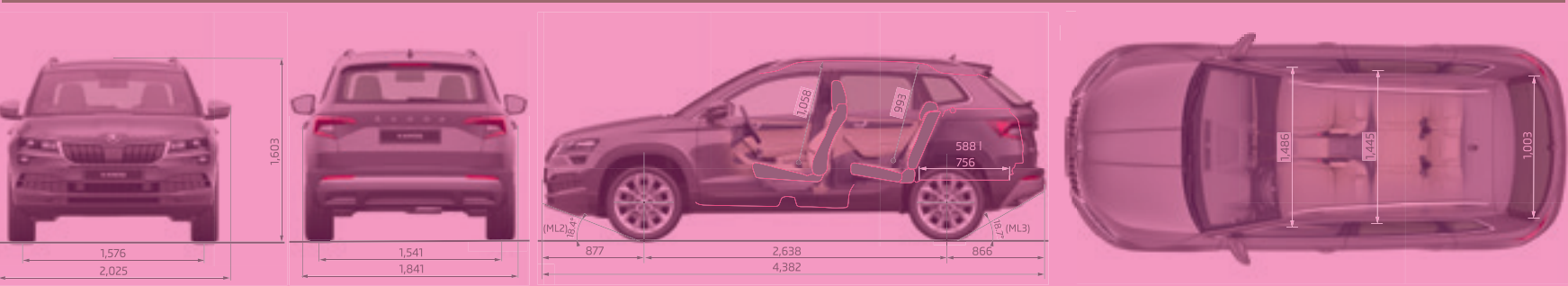
FURTHER SPECIFICATIONS

Body		Exterior dimensions	
Type	5-seater, 5-door, 2-compartment	Length/width/height (mm) – according to engine version	4,382/1,841/1,603; 1,607
Drag coefficient C <sub>w</sub>	0.317–0.329 according to engine version	Wheel base (mm) – according to engine version	2,638; 2,630
Turning circle diameter (m)	10.9/10.8 according to engine version	Track front/rear (mm) – according to engine version	1,576/1,541; 1,547
Chassis		Clearance (mm) – according to engine version	163; 167; 172
Front axle	McPherson suspension with lower triangular links and torsion stabiliser	Interior dimensions	
Rear axle	Twist-beam axle/4x4: multi-link axle with torsion stabiliser	Lateral room front/rear (mm)	1,486/1,445
Braking system	Hydraulic dual-diagonal circuit braking system vacuum assisted with Dual Rate	Effective head room front/rear (mm)	1,058/1,020; VarioFlex system: 993
– front brakes	Disc brakes with inner cooling and with single-piston floating caliper	Luggage storage space (max. l)	
– rear brakes	Disc brakes	Without spare tyre, with rear seat backrests	
Steering	Direct electric power steering	– upright/down	521/1,630
Wheels	6.0J x 16"	VarioFlex system: upright/down or removed seats	588/1,605–1,810
Tyres	215/60 R16; 215/60 R16 according to engine version	Tank capacity (l)	50; 4x4: 55

BASIC VERSION



VERSION WITH VARIOFLEX





#### IMAGE DISCLAIMER

The images presented in this catalogue (brochure) are used for illustrative purposes only and are not intended to form part of any contract or warranty. They display pre-series cars and certain illustrations, features, parts and equipment may differ from the actual production cars and from country to country. To get the exact specification of features, parts and equipment, please get in touch with your nearest local ŠKODA dealer.



#### MyŠKODA APP

Enjoy full control of your car. Download MyŠKODA App and access all necessary features anytime, whether it's driving data, fuel range, planning a route or even where you last parked.

**IF YOU'VE ENJOYED READING ABOUT IT  
— IMAGINE DRIVING IT**

**CALL US TO ARRANGE A TEST DRIVE**

06/2021

Your ŠKODA partner: